



## **Operating Instructions**

1997 – 2003

Ford F-Series, Expedition, Navigator, Excursion

4.6 and 5.4 Liter



# TABLE OF CONTENTS

<u>SECTION TITLE</u>	<u>PAGE #</u>
Disclaimer.....	2
Vehicle Warranty.....	3
About the Evolution.....	4
Display and Keypad.....	7
Getting Connected.....	8
Power Programming.....	12
Custom Options.....	14
Diagnostics.....	19
Performance Testing.....	21
Setup.....	23
Changing the Backlighting.....	27
Alerts.....	29
Records.....	30
Restoring Defaults.....	31
Lightning® PC Software Overview.....	32
Recommended Dyno Procedure.....	39
Troubleshooting/Tips.....	40
Commonly Used Acronyms.....	41

**Programming your vehicle may expose existing defects in your vehicle’s PCM that could disable your vehicle. It is advised that you do not program your vehicle in remote locations in case of vehicle failure.**

If you have used another tuner/programmer on your truck, you will need to program your truck back to stock before using the Evolution.  
***Failure to return to stock may result in PCM failure or engine damage.***

©2000-2006, Edge Products, LLC  
 All rights reserved.  
 Edge Products, LLC  
 1080 South Depot Dr.  
 Ogden, UT 84404  
 (801) 476-3343  
 www.edgeproducts.com  
 Manual Version 060425a

**THIS IS A HIGH PERFORMANCE PRODUCT. USE AT YOUR OWN RISK.**

Do not use this product until you have carefully read the following agreement.

This sets forth the terms and conditions for the use of this product. The installation of this product indicates that the BUYER has read and understands this agreement and accepts its terms and conditions

**DISCLAIMER OF LIABILITY**

Edge Products, LLC and its successors, distributors, jobbers, and dealers (hereafter **SELLER**) shall in no way be responsible for the product's proper use and service. THE BUYER HEREBY WAIVES ALL LIABILITY CLAIMS.

The **BUYER** acknowledges that he/she is not relying on the **SELLER's** skill or judgment to select or furnish goods suitable for any particular purpose and that there are no liabilities which extend beyond the description on the face hereof and the **BUYER** hereby waives all remedies or liabilities, expressed or implied, arising by law or otherwise, (including without any obligations of the **SELLER** with respect to fitness, merchantability and consequential damages) or whether or not occasioned by the **SELLER's** negligence.

The **SELLER** disclaims any warranty and expressly disclaims any liability for personal injury or damages. The **BUYER** acknowledges and agrees that the disclaimer of any liability for personal injury is a material term for this agreement and the **BUYER** agrees to indemnify the **SELLER** and to hold the **SELLER** harmless from any claim related to the item of the equipment purchased. Under no circumstances will the **SELLER** be liable for any damages or expenses by reason of use or sale of any such equipment.

The **SELLER** assumes no liability regarding the improper installation or misapplication of its products. It is the installer's responsibility to check for proper installation and if in doubt, contact the manufacturer.

**LIMITATION OF WARRANTY**

Edge Products, LLC (hereafter "**SELLER**") gives Limited Warranty as to description, quality, merchantability, fitness for any product's purpose, productiveness, or any other matter of **SELLER's** product sold herewith. The **SELLER** shall be in no way responsible for the product's open use and service and the **BUYER** hereby waives all rights other than those expressly written herein. This Warranty shall not be extended or varied except by a written instrument signed by **SELLER** and **BUYER**.

The Warranty is Limited to one (1) year from the date of sale and limited solely to the parts contained within the product's kit. All products that are in question of Warranty must be returned shipping prepaid to the **SELLER** and must be accompanied by a dated proof of purchase receipt. All Warranty claims are subject to approval by Edge Products, LLC.

If the **BUYER** sends back a failed unit that is out of warranty and chooses to buy a refurbished unit, the refurbished unit will only carry a 60 day warranty. If the **BUYER** purchases a new unit at a predetermined discounted rate, it will have the standard 1 year warranty.

Under no circumstances shall the **SELLER** be liable for any labor charged or travel time incurred in diagnosis for defects, removal, or reinstallation of this product, or any other contingent expenses.

Under no circumstances will the **SELLER** be liable for any damage or expenses insured by reason of the use or sale of any such equipment.

IN THE EVENT THAT THE BUYER DOES NOT AGREE WITH THIS AGREEMENT: THE BUYER MAY PROMPTLY RETURN THIS PRODUCT, IN A NEW AND UNUSED CONDITION, WITH A DATED PROOF OF PURCHASE, TO THE PLACE OF PURCHASE WITHIN SIXTY (60) DAYS FROM DATE OF PURCHASE FOR A FULL REFUND.

THE INSTALLATION OF THIS PRODUCT INDICATES THAT THE BUYER HAS READ AND UNDERSTANDS THIS AGREEMENT AND ACCEPTS ITS TERMS AND CONDITIONS.

Legal in California only for racing vehicles which may *never* be used upon a highway.

## **AFTERMARKET PRODUCTS AND YOUR VEHICLE'S WARRANTY**

Many of our customers ask, "Will your product void my vehicle's manufacturer's warranty?" While the answer is straightforward from a legal standpoint, we also want to educate our customers (and after-market consumers) on some industry realities and offer some common sense precautions to minimize your risk.

Consumers of aftermarket products are protected by The Federal Magnusson-Moss Warranty Act. The Act states that if something breaks on your car and you take it in for warranty repair, the dealer must honor your warranty unless they can prove that whatever modifications you have added to your car actually caused the problem.

While as a consumer you have strong legal protection regarding your vehicle's warranty, there is also a practical reality that different automotive manufacturers and dealers have greatly varying views on aftermarket products, in particular those that produce horsepower, such as performance enhancement chips, modified intake manifolds, or aftermarket exhaust systems. There are dealers and manufacturers out there that will use the presence of a horsepower upgrade to void your vehicle's warranty. They will do this regardless of whose product you are using. Any aftermarket company that does not acknowledge this is misleading you.

The bottom line is that while the law protects the consumer and provides for enforcement of the warranty, it is very difficult for most people to hire an attorney and fight a voided warranty. Edge recommends that you **always disconnect and/or remove any performance device or programmer before you take your vehicle to a dealer for any service**, in order not to interfere with Diagnostic equipment.

## About the Evolution

Congratulations on purchasing the *Evolution* by Edge Products, LLC, the leader in truck performance and power gain technology. The following manual contains information and instructions on the proper use of the *Evolution*. Please read carefully before proceeding to program your vehicle.

**Note: Read the product disclaimer and the *Getting Connected* section before programming your vehicle.**

**Note: At the back of this manual, we have included commonly used acronyms. This should help while using the *Evolution*.**

### Stock Program

The *Evolution* automatically makes a backup of your stock program from your PCM before writing a new program onto your PCM. This assures that you will have the stock program if/when you desire to reprogram your vehicle to its original stock program.

It is *strongly* recommended prior to returning your vehicle to a service center or emissions check that you return your vehicle's computer to the stock program. In the event that the service center re-flashes your vehicle's computer (a common practice) and you have NOT returned it to stock, your *Evolution* programmer will be rendered useless. If this happens, call our technical support at (888) 360-EDGE and they can help you recover your *Evolution* for a small fee. Follow the steps included in this manual for returning your program to stock.

### Transmission Only Program

This setting is the lowest level setting. It will provide firmer transmission shifts which helps to increase the transmission life. It does not provide any engine performance increases and is designed to run with regular unleaded (85 to 87 octane) fuel.

### Tow Performance Program (87+ octane fuel)

This setting not only provides improved transmission shifting, but will also modify the ignition timing and fuel injection strategies to improve the performance of your vehicle. This level is designed to run with 87 octane fuel, although you may realize additional benefits by running 89 octane (or better) fuel. You should see an improvement in fuel economy as well as added horsepower and torque. When towing a heavy load such as a boat or camper, we recommend you using this setting.

### High Performance Program (91+ octane fuel)

This is the highest performance setting for the *Evolution*. The fuel injection and ignition timing strategies are aggressively tuned to extract the maximum performance from your vehicle without sacrificing drivability or durability. The transmission strategy is modified to take advantage of the increased engine performance by providing quicker, firmer shifts. Due to the high performance nature of this setting, you will be required to run 91 octane (or better) fuel.

## PIDs

The *Evolution* allows the user to view up to 4 PIDs at one time. There are 14 different PIDs to choose from. Below is a list and description of each:

- RPM (revolutions per minute) – Engine speed.
- MPH (miles per hour) – *Note: Dash display may be +/-3 MPH off from the digital display due to mechanical differences in the spring, etc. used to control the gauge.*
- ECT (engine coolant temperature) – Degrees F.
- CHT (cylinder head temperature) – Degrees F.
- IAT (intake air temperature) – Degrees F.
- MAF (mass air flow) – Used to determine air/fuel ratio.
- SPARK (spark advance) – Current timing advance/retard for the spark plugs.
- LOAD (engine load %) – Percentage of total power available being used by the engine.
- BAT (battery voltage)
- IMPG (instantaneous miles per gallon)
- AMPG (average miles per gallon)

## Diagnostics

The *Evolution* is also a powerful diagnostics tool. You can view any diagnostic trouble codes (DTCs) your vehicle may have, which in turn allows you to fix them. It will also allow you to turn off that annoying “Check Engine” light when the problem has been addressed (no more expensive trips to the dealer for a diagnostics scan).

## 0-60 and Quarter Mile time

Another feature of the *Evolution* is the ability to determine your quarter mile times as well as your 0-60 times. This is very easy to use and not all tuners have this feature.

## Alerts

A feature that might come in handy is the alerts. If you would like to know when a certain parameter, such as transmission temperature, reaches a certain value you could set an alert to that value. As the preset value is reached, the *Evolution*'s screen will flash red and display which alert was triggered and the current value for that particular alert parameter.

## Records

While the *Evolution* is displaying parameters of your truck it will record the highest value the parameters have reached. These records could be viewed and reset at any time.

---

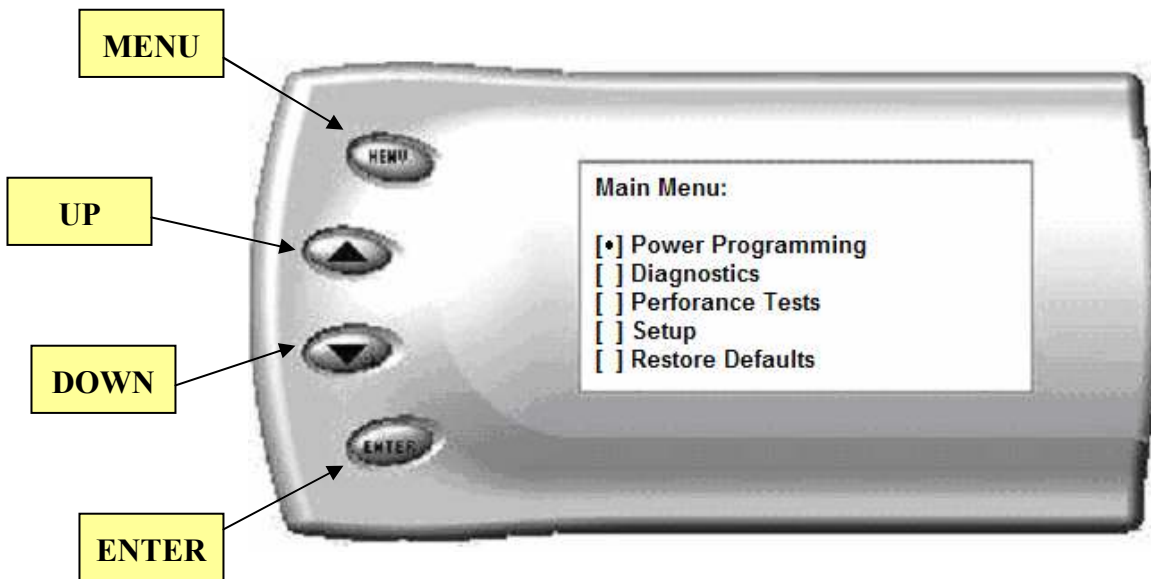
## **Custom Options**

While programming your vehicle, you have the option to customize our tuning. You can change your tire size value which can correct your odometer readings that result from changing tire sizes. You can also correct the gear ratios of your truck.

WOT (wide open throttle) shifting, standard shifting, shift firmness, rev. limiter, speed limiter, timing and WOT fuel are also parameters that you can change while programming your vehicle.

## Display and Keypad

The following picture is a sample *Evolution* screen. Great effort has gone into making the *Evolution* programmer very simple to use. The [UP] and [DOWN] arrow keys are used to scroll through options on the screen. The [ENTER] key is used to select desired options from a menu or move to the next screen. The [MENU] key is used to enter the Main Menu from the parameter display or return to the previous screen. This version of the *Evolution* also has the option to change the backlighting color of the display to a wide range of colors.





## Getting Connected

The *Evolution* programmer connects to the diagnostic port of your vehicle. Follow these steps to install the *Evolution*:

1. Begin by turning your ignition key to the OFF position. Locate the black diagnostic (OBDII) connector (Figure #1) under the dash near the steering column. As you sit in your vehicle, it should be located right above your right knee. Sometimes the cover to this connector will be labeled "Data Link." Feed the cable up over the two black dash support bars (Figure #2), and then behind the E-brake support bracket, and out between the E-brake release handle and the top of the kick panel (Figure #3). Do not plug into the OBDII connector yet.



Figure #1



Figure #2



Figure #3

2. With the driver's side door open, remove the seal trim on the left side of the dashboard (Figure #4). Run the cable behind the two panels on the left side of the dash and pull it out by the a-pillar (Figure #5).



Figure #4

Figure #5

3. Feed roughly 8 to 10 inches of cable between the A-Pillar and the dashboard. Mount the Pod onto the dashboard (shown in Figure #6) with the end of the cable protruding through the front of the Pod.



Figure #6

With the Pod secure, attach the *Evolution* to the cable and insert the *Evolution* into the Pod. Any excess cable may be stuffed behind the *Evolution* or may be pulled back through the dash to eliminate slack. The result of the installation is shown in Figure #7. Be sure to use the supplied cable ties to secure any excess cable underneath the dash to prevent the cable interfering with proper pedal operation.



Figure #7

- With the Pod and *Evolution* securely in place, turn the ignition key ON. Then plug the cable into the OBDII connector. The *Evolution* logo will display followed by a disclaimer. After you agree to the disclaimer by pressing [ENTER], the following screen will be displayed:



This is the hex code of the truck that the *Evolution* is currently connected to.

*Note: If no hex code is shown, disconnect from the OBDII plug and reconnect after 5 seconds. When you come to the screen again, the code should be available.*

- After pressing [ENTER], the main display will come up.



*Note: Parameters and values might vary.*

- There are five boxes that will be displaying information about your vehicle. The black box in the top right corner displays which level is currently programmed onto your vehicle.

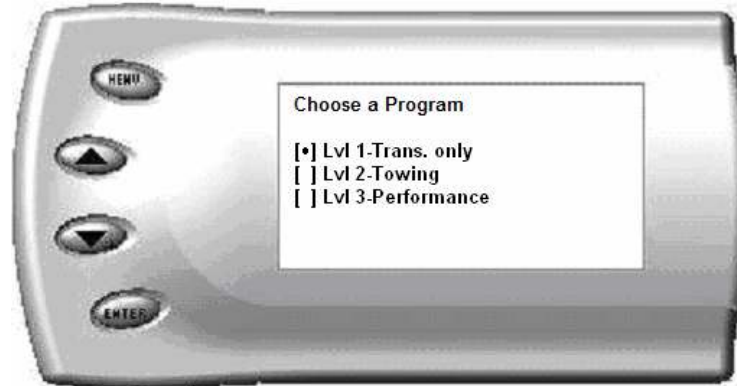
- 0** – Vehicle is currently at stock.
- 1** – Vehicle has been programmed to *Transmission Only* (Level 1).
- 2** – Vehicle has been programmed to *Towing* (Level 2).
- 3** – Vehicle has been programmed to *Performance* (Level 3).

The other four boxes can show up to 4 PIDs (Parameter IDs) of your vehicle. By default, they are your vehicle's RPM, MPH, CHT (cylinder head temperature), and ECT (engine coolant temperature). Optional parameters and display formats may be selected in the *Changing Display* section of this manual.

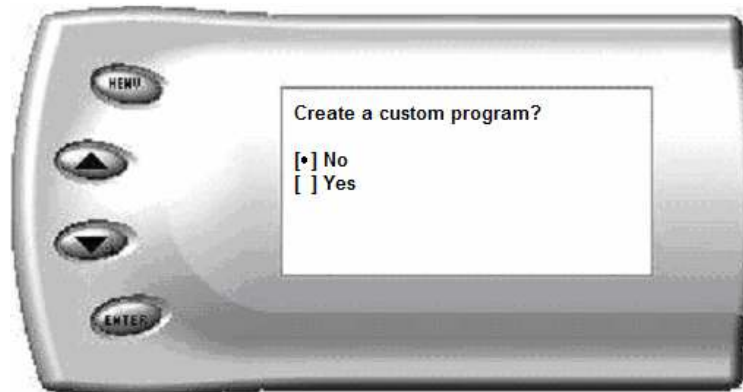
7. From this display, press [MENU] to select and use other features of the *Evolution*. The display backlight dimming can also be controlled from this display by using the [UP] and [DOWN] arrow keys.

## Power Programming

From the main screen, press [MENU] to enter the main menu. Then select *Power Programming*. The following screen appears:



1. Select the level that best meets your needs. For more information about each level, read the *About the Evolution* section in this manual (pg. 4). Confirm your selection by pressing [ENTER] on the following screen. After confirming, the screen below will appear:



2. You have the option to change certain parameters of the level you chose. If you would like to learn more about what parameters are available and how to use them, then read the *Custom Options* sections in this manual. To use the standard program without customizing options, simply press [ENTER] (choose NO).

*Note: The very first time that you program your truck, custom options will NOT be allowed. Please try out the standard levels and then make adjustments where you feel appropriate. Remember, the level files Edge Products has designed are the recommended settings. Change options at your own risk.*

3. The *Evolution* will ask you to turn the key OFF and then ON. Do NOT crank the engine or possible programming failure may result.
4. During the first use, the *Evolution* will read the original calibration from your PCM and then build all the necessary programs. This will take approximately 2-4

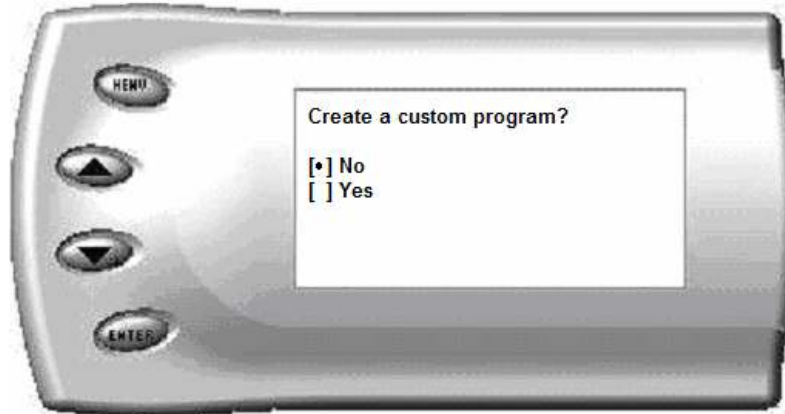
minutes. This step is skipped when programming from level to level or back to stock.

5. The *Evolution* will erase your PCM and then write the selected calibration (level) onto the PCM. This process takes approximately 2 minutes to complete. If at any time you receive an error message, refer to the *Troubleshooting* section at the back of this manual for further instructions.
6. When the *Evolution* is done programming, the following screen will appear for about 2 seconds and then return to the Main Menu:



## Custom Options

When preparing to program your vehicle, you will have the option to change certain parameters. Choosing YES when prompted to “Create a custom program?” will load the *Custom Options* menu.



Custom Options are provided to allow for flexibility based on driver preferences. Any option customization done by the user is not warranted by Edge Products. Please use at your own discretion.

The following customizable options are available:

### **Gear Ratio**

The *Evolution* has the ability to correct for modified gear ratios. Do not change the value displayed on the *Evolution* unless you have changed the rear differential gear. For 4WD vehicles, both the front and rear differential gears should be the same.

Some reasons for changing gears ratios include:

1. To maintain the optimum ratio between the engine RPM and tire RPM. Changing tire sizes affects this ratio. Changing the differential gear helps to restore the proper ratio.
2. When drag racing, changing to a higher gear will provide more torque off the starting line. There are formulas that show the best gears to use based on HP, vehicle weight, as well as other factors. Be aware that when running higher gears your engine will run at higher RPMs and your fuel economy may suffer.

The default value the *Evolution* displays is the current value stored in the PCM.





Adjust the value displayed by pressing the [UP] and [DOWN] arrow keys. You can change the gear ratio from 2.73 to 5.13 in increments of 0.01. Changing this value will allow your PCM to accurately calculate vehicle speed and odometer readings. These changes will also affect your shift points.

### **Tire Size**

The *Evolution* has the ability to correct for changes in tire size. If you have changed your tires to a different size the PCM will miscalculate vehicle speed which can affect shifting as well as the speedometer. Correcting the tire size will allow the PCM to accurately calculate vehicle speed and odometer readings. You will not need to change the value displayed if you are running factory size tires. After choosing to set your tire size, the follow screen appears:



The numbers on this screen represent the circumference (in mm) of your tire size. The default value the *Evolution* displays is the current value stored in the PCM. Adjust the tire size by pressing the [UP] and [DOWN] arrow keys.

The following table will help you determine your tire circumference by matching your tire size with the common sizes listed. For example, if your tire size is 285/ 65-18, the value (circumference) you enter into the *Evolution* is 2600. You may also use the formula provided to determine your approximate tire circumference. Finally, you may also measure your tire's circumference by marking your tire and rolling it one complete revolution and measuring the distance in inches or millimeters. If you measure in inches, multiply the distance by 25.4 to convert to mm. (ex. 91.3 inches x 25.4 = 2319 mm). The range of change is from 2000mm to 3500mm in increments of 1mm.

<u>Width</u>	<u>Ratio</u>	<u>Rim</u>	<u>Circumference</u>	<u>Tire Size</u>	
265	70	16	2441mm	33	2632mm
275	70	16	2485mm	35	2792mm
305	70	16	2617mm	37	2951mm
215	75	16	2289mm	38	3031mm
245	75	16	2430mm		
265	75	16	2524mm		
285	75	16	2618mm		
295	75	16	2666mm		
305	75	16	2713mm		
315	75	16	2760mm		
325	75	16	2807mm		
265	70	17	2521mm		
285	75	17	2698mm		
315	75	17	2840mm		
275	65	18	2559mm		
285	65	18	2600mm		
285	60	18	2510mm		
325	60	18	2660mm		

**Circumference Equation:**

$$[(\text{width} * \text{ratio} * 0.02) + (\text{rim} * 25.4)] * 3.1415$$

**Steps:**

1. Multiply **Width**, **Ratio** and **0.02**
2. Multiply **Rim** and **25.4**
3. Add Step #1 with Step #2
4. Multiply Step #3 with **3.1416**
5. The result will be the circumference of your tire in mm.

**When adjusting the following values, it is highly advised to make gradual changes as opposed to aggressive changes. This will help avoid possible engine or transmission damage.**

### ***WOT (Wide Open Throttle) Shifting***

On automatic transmissions, these are the RPM points at which the vehicle will shift when you are at Wide Open (full) Throttle. Raising these values helps to keep the engine in the peak power curve after a shift.

(Hint: Raising these values may help improve 0-60 and quarter mile times.)

### ***Standard (Std.) Shifting***

On automatic transmissions, these are the MPH points at which the vehicle will want to shift during normal acceleration. Positive values will cause later shifts while negative values will cause shifts to occur sooner.

(Hint: Negative values may help improve fuel economy while positive values will improve performance.)

## **Shift Firmness**

On automatic transmissions, these values represent a percentage change in shift firmness, or in other words how “hard” your transmission will shift. A positive number will cause the shift to be firmer. A negative number will cause it to be softer.

(Hint: Firming up the shifts may help improve 0-60 and quarter mile times.)

## **Rev. Limiter**

The Rev. Limiter prevents the engine from over-revving and causing engine damage. If you set this value to 4500, you would not be able to rev the engine beyond that even with the accelerator to the floor. Setting this value higher can help take advantage of the power generated at higher RPMs. Setting this value too high can cause damage to your engine. Also make sure to set the Rev. Limiter at least 150 RPM higher than the highest WOT Shift Point or you may experience erratic shifting.

## **Speed Limiter**

The Speed Limiter restricts the top speed of the vehicle. Factory speed limit values are generally based on the tolerances of the driveline components. Excessive vehicle speeds can cause component failures (ex. tire or universal joint failure) possibly resulting in loss of control, property damage, injury, and even death. **Raising this value is recommended for off-road or racing applications only.**

(Hint: This value may be lowered in fleet situations or situations where young drivers are present.)

## **Timing Adjust**

This Timing Adjust option helps determine the final ignition timing. Increasing the timing value may help improve fuel economy as well as overall performance. However, choosing too high of a timing value might cause detonation (pinging), which may cause serious harm to your engine. Lowering this value will not harm the engine but may reduce performance and economy. Lowering is also necessary for vehicles with superchargers, etc. installed. (Hint: This value may be raised .5 for every fuel octane count you increase in fuel)

## **WOT Fuel**

The WOT Fuel option adjusts the amount of additional fuel during Wide Open (full) Throttle. A value of 150 increases the fuel by 50%. A value of 180 increases the fuel by 80%. Using a higher value may improve performance during hard acceleration. This value only affects WOT fueling and has no effect on normal driving conditions.

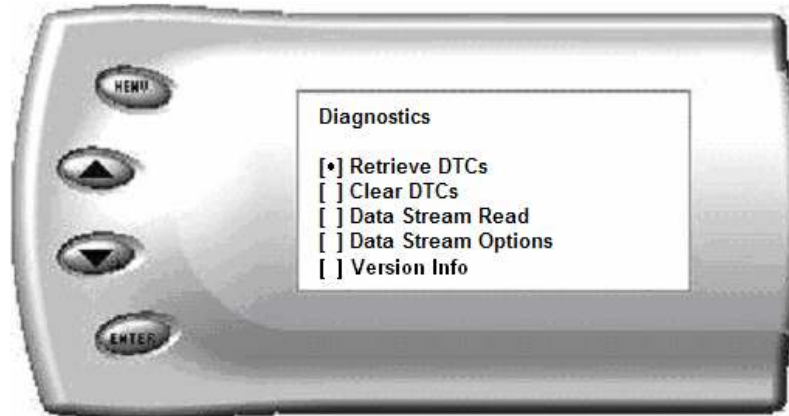
(Hint: Raising this value may help improve 0-60 and quarter mile times.)

*Note: After creating an initial custom program, you will be able to reload the options into any future programs by selecting the “Load Previous Settings” option. From there, you can modify the values more if desired.*

## Diagnostics

The diagnostics scanner included with your *Evolution* is a powerful tool that allows you to view and clear diagnostic trouble codes (DTCs) on your vehicle, as well as record a data stream (5 parameters of your choice) for 1 minute. DTCs are the messages your vehicle's computer stores when it detects a problem with your vehicle. The "Check Engine" light on your dash is activated by the presence of most DTCs.

If you selected *Diagnostics* from the main menu of the *Evolution*, the screen displays the following message:



## Retrieving Codes

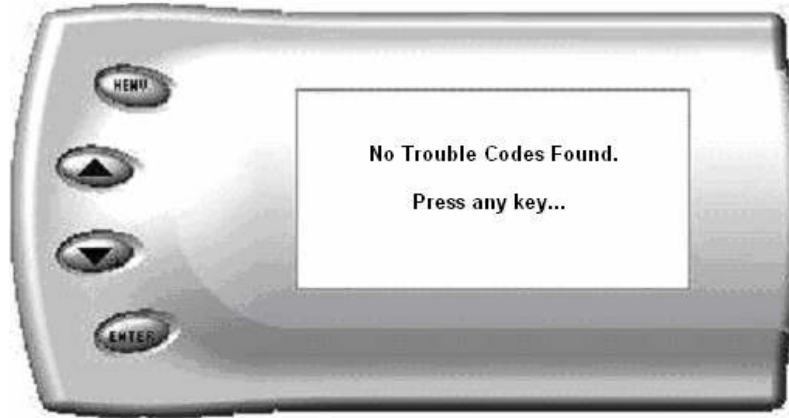
If you want to retrieve and view the DTCs on your vehicle, select the *Retrieve* option. Make sure your ignition is in the ON position.

After selecting the *Retrieve* option, any stored DTCs will appear on the screen like the following example:



Press [MENU] to exit the DTC list and return to the previous menu.

If you have no trouble codes, the following screen will appear:



### **Clearing Codes**

If you want to clear the DTCs on your vehicle, select the *Clear DTCs* option.

After selecting the *Clear DTCs* option, any current stored DTCs will be cleared from your vehicle and the “Check Engine” light will go out. However, if you do not address the issue that originally caused the DTC, the DTC will set again and the “Check Engine” light will come back on. Once the DTCs have been cleared, press [ENTER] to return to the previous menu.

### **Data Stream Read**

The *Evolution* has the ability to record 5 vehicle parameters for 1 minute. It will record each parameter every ½ second. The stored data can be retrieved by plugging the *Evolution* into a USB port on a computer via the supplied USB cable and accessing the data via the Lightning® utility software. The Lightning® software allows you to display stored data values as well as graph the data. See “Lightning® PC Software Overview” section for more information.

### **Data Stream Options**

This will allow you to choose which 5 parameters you wish to record for the data stream.

### **Version Info**

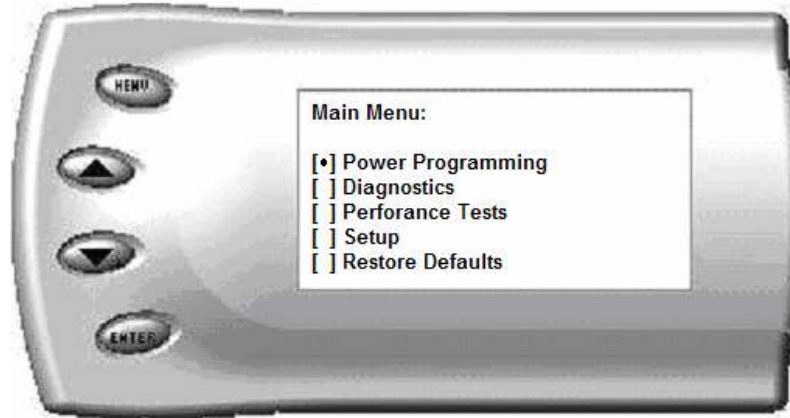
This displays the current Bootloader, Firmware, and Calibration versions installed on your *Evolution*. Your vehicle’s HEX code is also shown. Using the Lightning® software, you will be able to access online updates to ensure your *Evolution* is always up to date.

*Note: Make sure you return your vehicle to stock before attempting an update, or the PC software will not allow you to continue.*

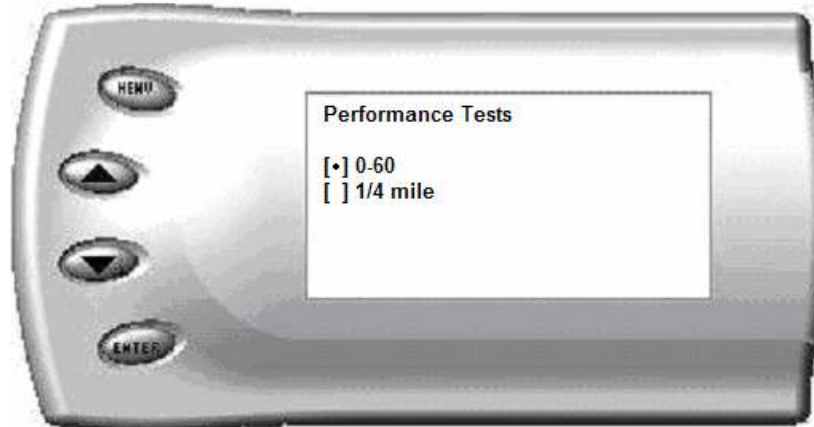
## Performance Testing

The *Evolution* allows you to test the performance of your vehicle by timing the 0-60 and the quarter mile times. It is helpful to remember these might not be results you would receive from actual races. Incorrect speedometer reading and tire slippage can cause slight miscalculations in the displayed results. To run these tests, perform the following steps:

1. Press [MENU] and the *Main Menu* screen should appear:



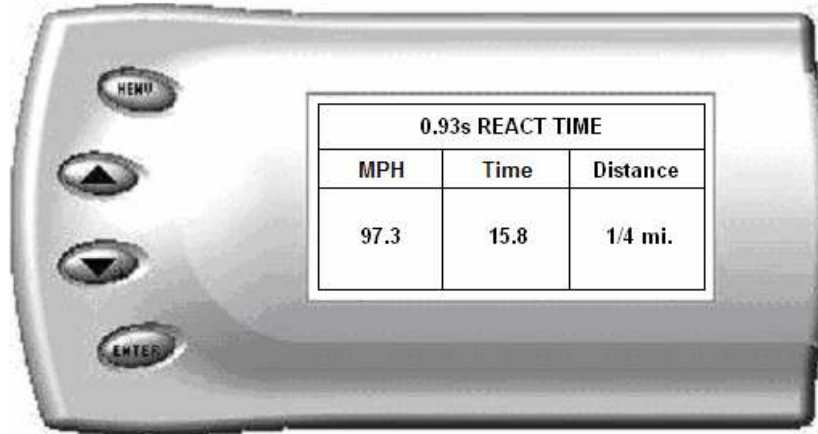
2. Select the *Performance Tests* option. The following screen appears:



3. Select the desired performance test (0-60 screen is shown below). If your vehicle is moving at this time, the *Evolution* will ask you to come to a stop.



4. For the 0-60 MPH run, press the accelerator pedal and the test automatically begins. For the ¼ mile test, you will be asked to press a key when ready. It will then cycle through a starting light sequence (Christmas tree) and tell you when to go. As you drive, the screen should be displaying your current speed. When the test is complete (the desired distance or speed is reached), the test will automatically stop and your time will be displayed on the screen as follows (quarter mile result example):



This will show how long it took you to cover 60 feet, 1/8 mile, and ¼ mile. In addition, your MPH at ¼ mile will also be shown (see the example above). The best run is stored for later viewing. You may also use the back of this manual to write down your times.

At the end of a ¼ mile run, you will see a reaction time at the top of the screen. This time begins when the final yellow light is displayed. The time between the final yellow and the green is a ½ second, so a perfect reaction time is a ½ second. The average person will see a response time of around 1 second. You'll get an "Illegal Start" message if you start before the green and your screen will turn red. You can still finish the run, but the screen will let you know that you started before the green light.

*Note: Along with the best speed and time being recorded for viewing in the Records section, your most recent run data will also be stored. This information can later be viewed using the Lightning® software to determine approximate horsepower, etc.*

5. After the test is complete, press [MENU] to return to the Performance Menu.

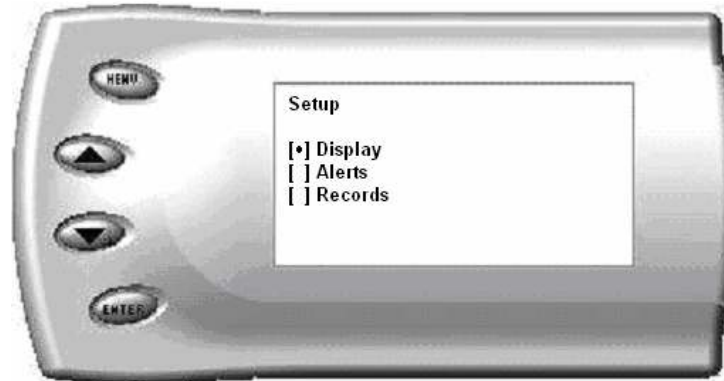
## Setup

The *Evolution* gives you even more additional features. You can choose from several different parameters to monitor, how these parameters are displayed, set parameter alerts, and view the highest value that certain parameters have reached.

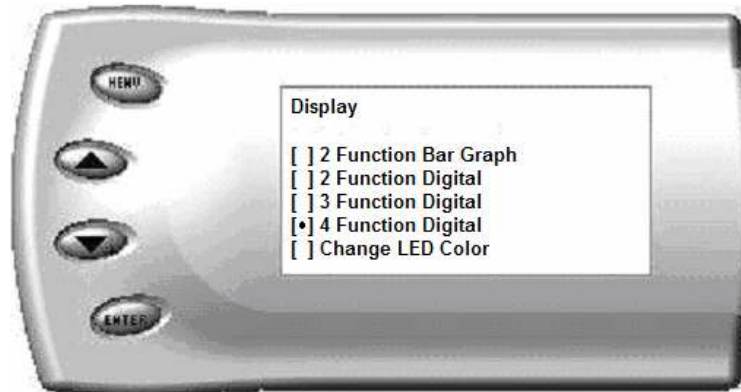
### Changing the Display View

The *Evolution* allows you to view multiple engine parameters on the same screen. To select a desired view, perform the following steps:

1. From the *Main Menu* select the *Setup* option. The *Setup* screen appears as follows:



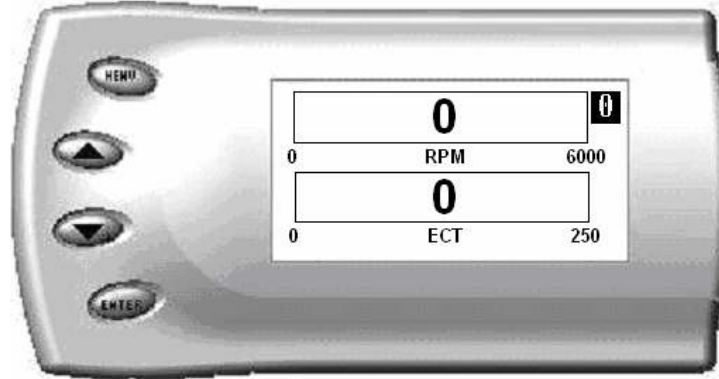
2. Select the *Display* option. The following screen appears:



3. Select the desired viewing option by using the [UP] and [DOWN] arrows and pressing the [ENTER] key on the desired display type. Below are examples of the display options:



### Two Function Bar Graph Display Sample



### Two Function Digital Display Sample



### Three Function Digital Display Sample



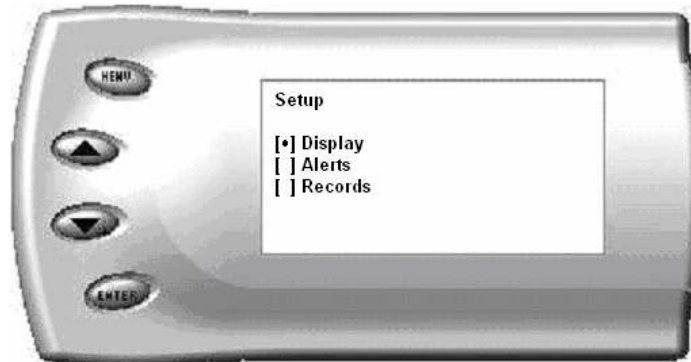
## Four Function Digital Display Sample



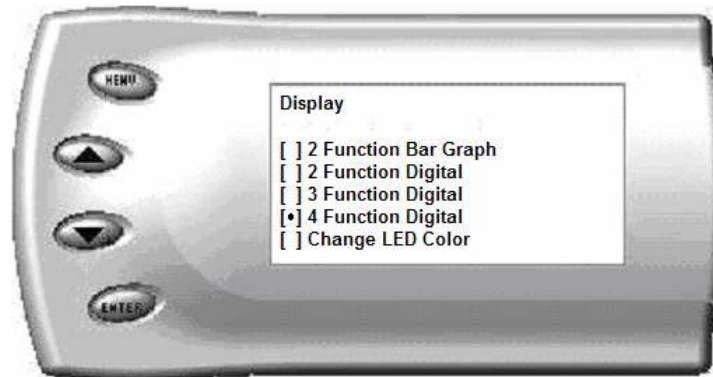
### Changing the Variables on the Screen

To change the variables on the screen, perform the following steps:

1. From the *Main Menu* select the *Setup* option. The *Setup* screen appears as follows:

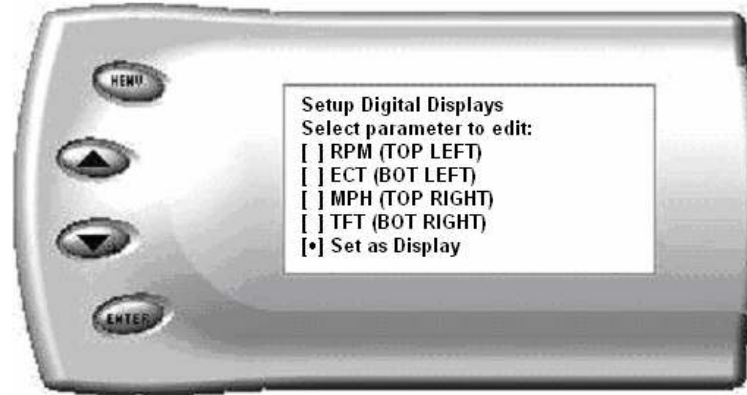


2. Select the *Display* option. The following screen appears:



3. Select the style which you would like the parameters to be displayed on your screen and press [ENTER].

4. Depending on which display you select, a screen similar to the following appears:



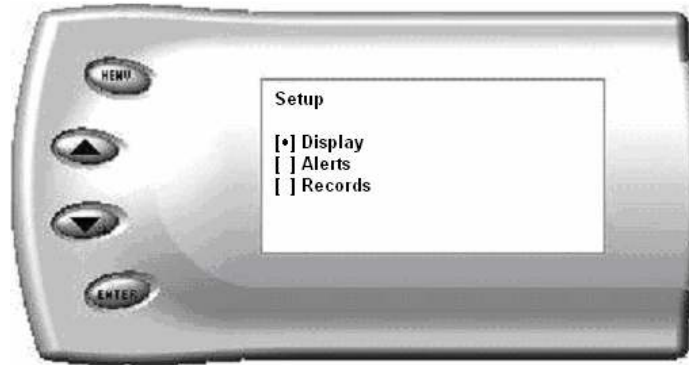
5. This screen lists the current parameters being displayed and their respective positions on the screen (i.e., TOP LEFT, etc.). Select the position you would like to change and press [ENTER]. A list of available parameters will be displayed. Select the parameter you would like to view and press [ENTER]. (A list of commonly used acronyms is located in the back of this manual and a in depth list of the PIDs supported is shown in the “About Evolution” section). Once you have selected your desired parameters, select the *Set as Display* option and press [ENTER]. You will return to the *Setup* menu with your new settings saved.

## Changing the Backlighting

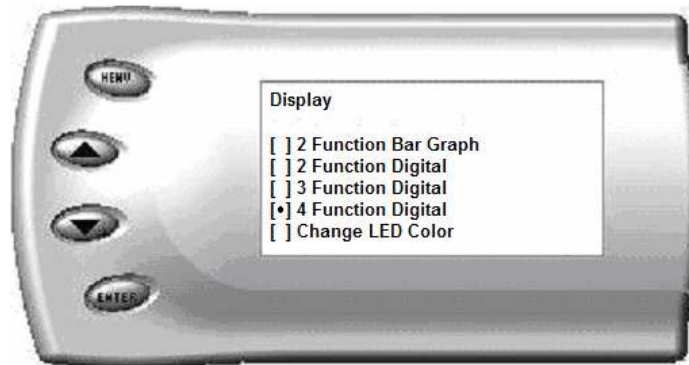
### Adjusting the Backlight Color

To change the backlighting color, perform the following steps:

1. From the *Main Menu* select the *Setup* option. The *Setup* screen appears as follows:



2. Select the *Display* option. The following screen appears:

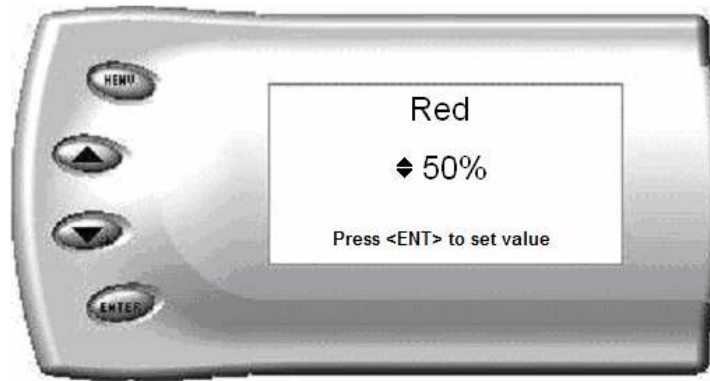


3. Select the *Change LED Color* option. The following screen appears:



4. Select the color you would like to change.

- Depending on the color you select, a screen similar to the following appears (example of Red):



- As you adjust the percentage shown on the screen, you should notice a change in the color of the screen. Once the desired color value has been reached, press [ENTER]. If you would like to return to the previous screen and abort the current color change, press [MENU].

### ***Adjusting the Backlight Brightness***

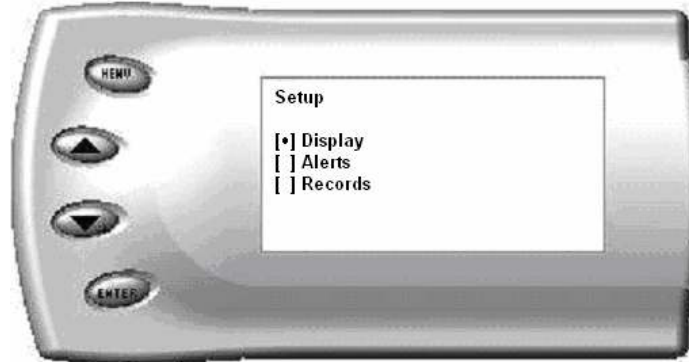
When viewing engine parameters (like the sample below) press the [UP] and [DOWN] arrow keys to adjust the brightness of the display. Each time the button is pressed the backlight will either brighten or dim by 10% of the total brightness. The default setting is 100% brightness.



## Alerts

If you would like to know when a certain parameter reaches a certain value, you can set an alert for that parameter by following these steps:

1. From the *Main Menu* select the *Setup* option. The *Setup* screen appears as follows:



2. Select the *Alerts* option. The following screen appears:



3. By default, the alerts are off. To turn them on, select the *Alerts are Off* option and press [ENTER]. The text line will now read *Alerts are On*. To change the value of a certain alert, select the parameter you want to change and press [ENTER]. The screen similar to the following will appear:

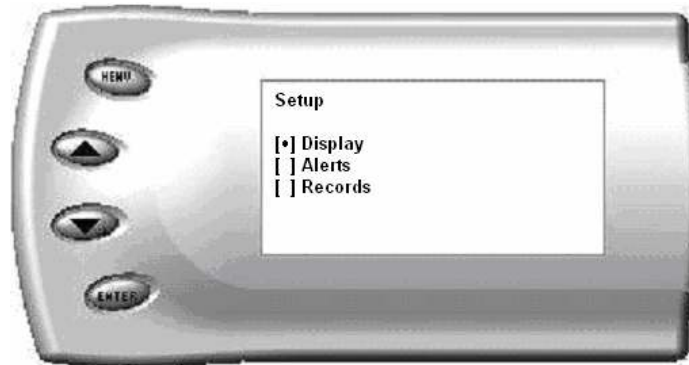


4. Press the [UP] and [DOWN] arrow keys until you have reached the desired value. Pressing [ENTER] will save the current alert value. If you would like to return to the previous screen and abort the current value change, press [MENU].

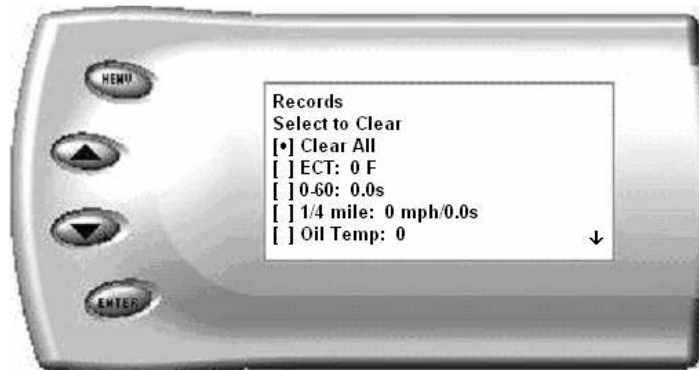
## Records

The *Evolution* automatically records the highest value of some of the parameters. To view these records and to reset them, do the following:

1. From the *Main Menu* select the *Setup* option. The *Setup* screen appears as follows:



2. Select the *Records* option. The following screen appears:

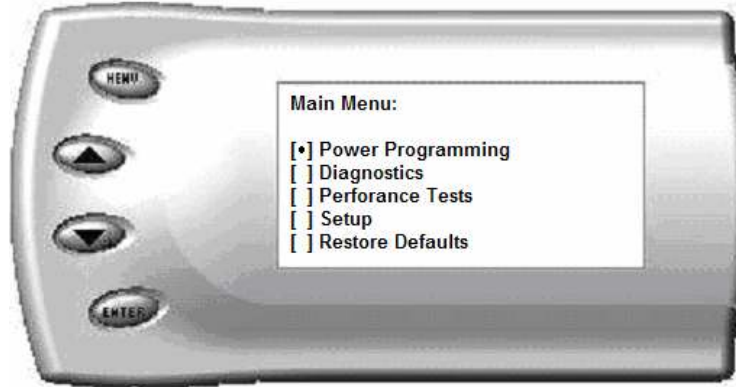


3. This is where you can view all of the current recorded high values. The arrow located at the bottom right corner of the screen indicates there are more parameters than the display can show. Use the [UP] and [DOWN] arrow keys to scroll through the list of records. If you would like to reset a single parameter, select the desired parameter and press [ENTER]. If you would like to reset all of the records, select the *Clear All* option and press [ENTER]. To exit out of this list press [MENU].

## Restore Defaults

If you would like to revert back to original factory settings, follow these steps:

1. Enter into the *Main Menu*. The *Main Menu* screen appears as follows:



2. Select *Restore Defaults*. The following screen will be shown:



3. Press [MENU] to return to the *Main Menu*.



## Lightning® PC Software Overview

Lightning® software allows the user to update their *Evolution* to the latest version of firmware and calibration files. It also allows you to review data from your vehicle that you've recorded. The software can be downloaded for free from Edge Products website at <http://www.edgeproducts.com/downloads.html>, or the CD can be purchased for a small fee by calling (801) 476-3343.

### Downloading the Software:

#### Step 1:

Go to [www.edgeproducts.com](http://www.edgeproducts.com) and click on Evolution updates found on the bottom left hand side of the screen, this will open another page that will give you the option to choose from either *A2 Updates*, or *Evolution Updates*. Select Evolution updates.

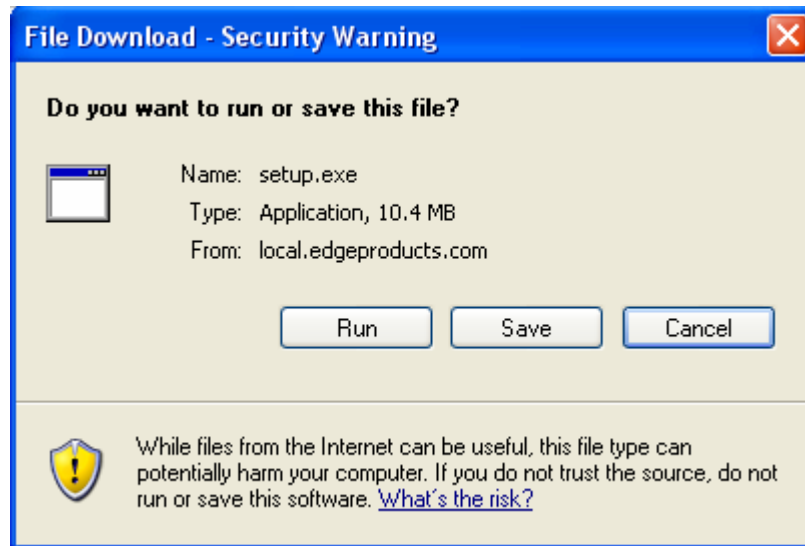
#### Step 2:

Left click the *DOWNLOAD* button located in the first box at the top of the page.



**Step 3:**

Left click the *Save* button in the *File Download* box. Save the file to your d desktop for easy access.

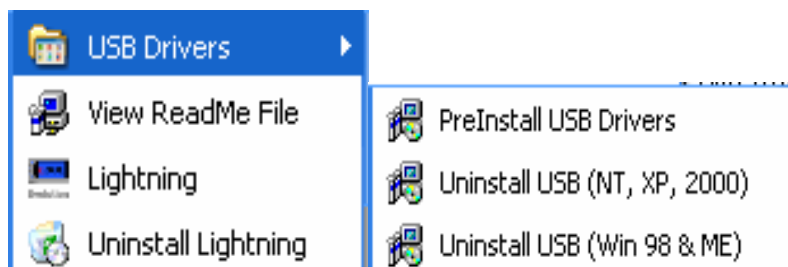


After you have selected *Save*, you will be prompted through the rest of the download screens. Once you have completed the install, the following Icon should be present on your desktop.

**Step 4: Installing drivers.**

**YOU MUST PRE-INSTALL THE DRIVERS PRIOR TO CONNECTING THE EVOLUTION TO YOUR COMPUTER.**

To install the drivers, click on the *Start* bar, then *All Programs*, then locate *Edge Products*. Highlight *USB Drivers*, and then select *PreInstall USB Drivers*.



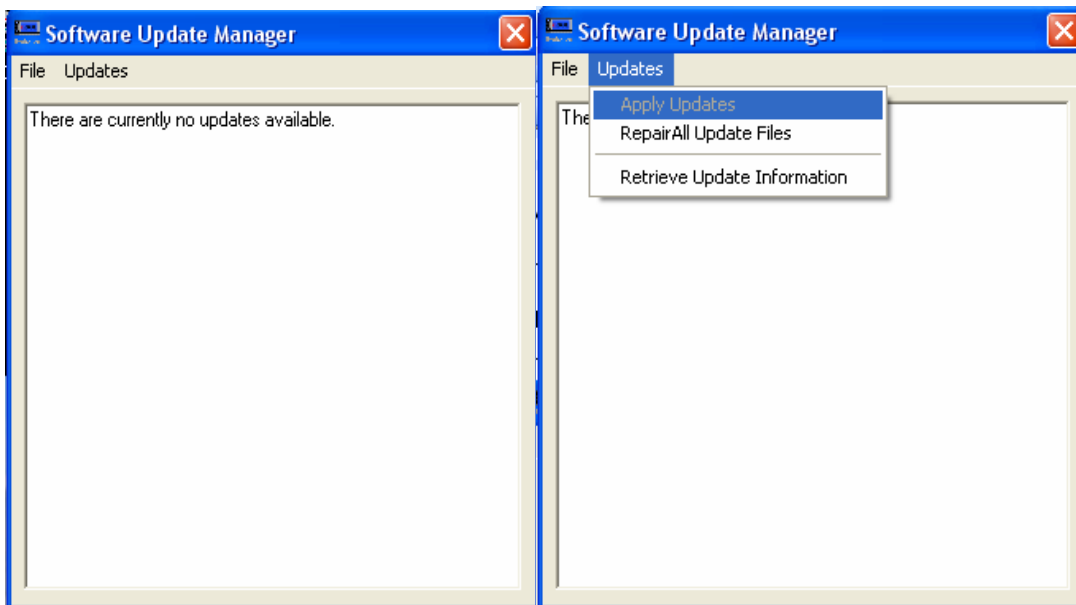
The install wizard will walk you through a series of steps to install the drivers, once you have finished, you will be ready to connect your *Evolution*.

Connecting the *Evolution* to a PC is as easy as finding an open USB port, hooking the *Evolution* to it and running the Lightning® software. Below is an explanation of the different features available:

## Checking for Updates

### Lightning Updates:

Select the *Update* file, and select *Lightning Updates*. The Lightning® software will first check itself to see if there is an update. If there is, an update will appear, and list the available updates. If there aren't any updates available for the Lightning software, then the following screen will appear.



### **NOTE:**

*If the Lightning update manager shows available updates, click on updates, and then click apply updates*

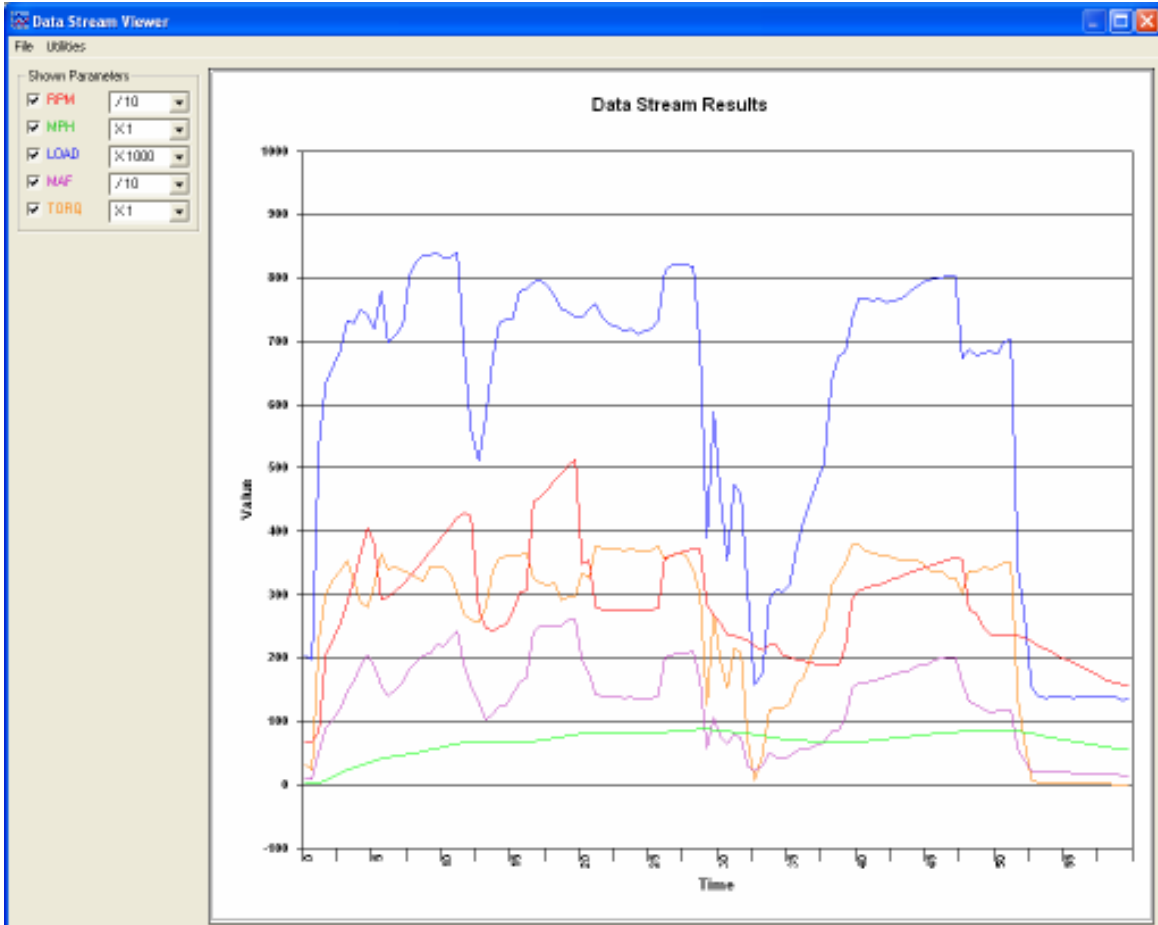
### Evolution Updates:

Select the *Update* file, and then select *Evolution Updates*. Make sure that the evolution is connected, and be sure that the *Lightning Software* screen shows connected. The *Evolution Update Manager* will display all of the Evolution updates that are available. If the screen shows available updates, click on updates, and select *Apply updates*.

**Note: The Evolution needs to be returned to stock before any updates can be performed. If this is not done, the software will not allow you to continue.**

## Read Data Stream

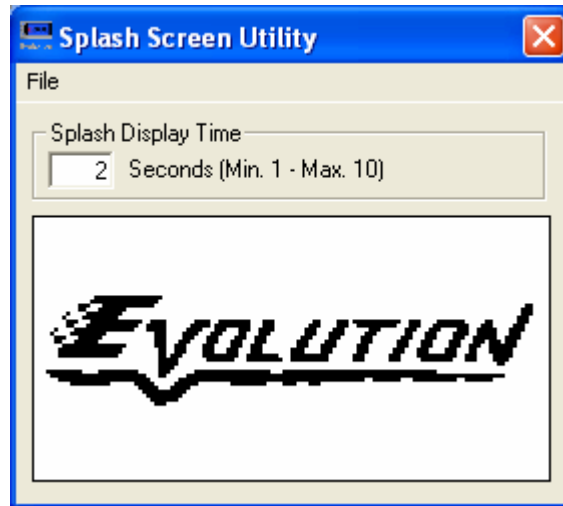
Select the *Utilities* menu and click on *View Data Stream*. If you have recorded any data using the Data Stream option on the *Evolution*, you can access it by selecting *Utilities* and then *Read Data Stream*. This will bring up a chart displaying what you have stored. You have the option to scale this data and turn it on and off as desired. Below is a screen shot of an example recorded run:



To save the data for future viewing, select *File* and then *Save As*. To load previous data, select *File* and then *Open*.

## Change Splash Screen

Select the *Utilities* menu and click on *Change Splash Screen*. This will allow you to change the introduction screen that is displayed on the *Evolution* every time the key is turned on. The below screen shot will come up initially:



Select the *File* menu and click on *Load Image*. Select the number of seconds you would like to view the picture for during start-up, and then select the *File* menu again and click on *Save Image*. This will save the image to the *Evolution*. You can repeat this as often as you'd like.

Included with the Lightning® software are a few different images for you to choose from.

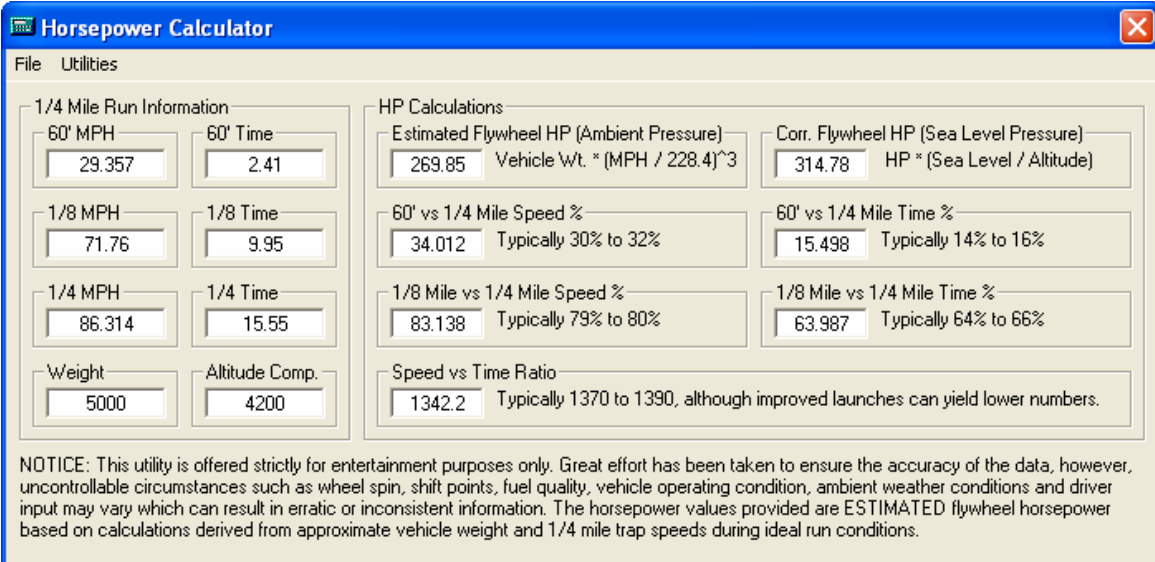
*Note: Only black and white .BMP images (1 bit per pixel) that are 128 by 64 pixels can be used. The Splash Screen Utility will not allow you to use a picture that doesn't meet these requirements.*

## Read Stock Calibration

If you get an error from your *Evolution* stating that you need to check for updates (Error Code: 0xf1) right after reading your stock program from the truck and updating the *Evolution* doesn't solve the problem, you will need to email Tech Support your stock calibration so that a new calibration file can be created for your vehicle type. Select the *Utilities* menu and click on *Read Stock Calibration*. The Lightning® software will download the stock.bin and vid.bin files stored on the *Evolution*. Call tech support to determine where you need to send these files.

## Horsepower Calculator

Select the *Calculators* menu and click on *HP Calculator*. The following appears:



**Horsepower Calculator**

File Utilities

**1/4 Mile Run Information**

60' MPH	60' Time
29.357	2.41
1/8 MPH	1/8 Time
71.76	9.95
1/4 MPH	1/4 Time
86.314	15.55
Weight	Altitude Comp.
5000	4200

**HP Calculations**

Estimated Flywheel HP (Ambient Pressure)	Vehicle Wt. * (MPH / 228.4)^3	Cor. Flywheel HP (Sea Level Pressure)	HP * (Sea Level / Altitude)
269.85		314.78	
60' vs 1/4 Mile Speed %		60' vs 1/4 Mile Time %	
34.012 Typically 30% to 32%		15.498 Typically 14% to 16%	
1/8 Mile vs 1/4 Mile Speed %		1/8 Mile vs 1/4 Mile Time %	
83.138 Typically 79% to 80%		63.987 Typically 64% to 66%	
Speed vs Time Ratio			
1342.2 Typically 1370 to 1390, although improved launches can yield lower numbers.			

NOTICE: This utility is offered strictly for entertainment purposes only. Great effort has been taken to ensure the accuracy of the data, however, uncontrollable circumstances such as wheel spin, shift points, fuel quality, vehicle operating condition, ambient weather conditions and driver input may vary which can result in erratic or inconsistent information. The horsepower values provided are ESTIMATED flywheel horsepower based on calculations derived from approximate vehicle weight and 1/4 mile trap speeds during ideal run conditions.

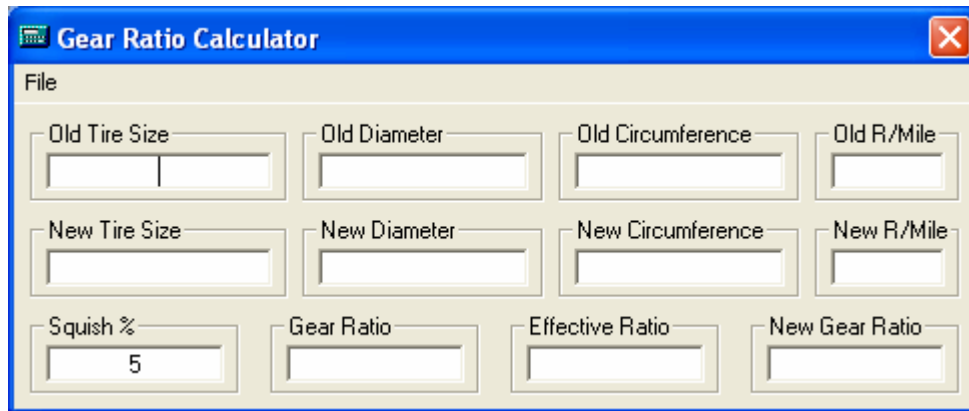
If you have performed a ¼ mi. run using the utility built into the *Evolution* and connected it to the PC, you can load your saved run by selecting *Utilities* and then *Read ¼ Mile Data*. All you will have to do is enter truck weight and approximate elevation to get an accurate horsepower rating (at the fly wheel).

To save this run for future viewing, select *File* and then *Save As*. To load a previously saved run, select *File* and then *Open*. You may also change any values on the form to view “what-if” scenarios or previous runs that you didn’t record with the *Evolution*.

*Note: Horsepower values are ESTIMATES only and are based on ideal run conditions.*

## Gear Ratio Calculator

Select the *Calculators* menu and click on *Gear Ratio Calculator*. The following appears:



The screenshot shows a software window titled "Gear Ratio Calculator" with a blue title bar and a red close button. The window contains a "File" menu and several input fields arranged in a grid:

Old Tire Size	Old Diameter	Old Circumference	Old R./Mile
New Tire Size	New Diameter	New Circumference	New R./Mile
Squish % 5	Gear Ratio	Effective Ratio	New Gear Ratio

You can use this form to determine the proper ratio to place in the *Custom Options* menu during programming of a vehicle.

## **Recommended Dyno Procedure**

Using a dynamometer (dyno) to measure the power output of a vehicle is a popular and very accurate method to check the performance gains achieved when making modifications to a vehicle. Traditionally, you would select a gear that would provide a 1:1 ratio through the transmission. This is usually 4<sup>th</sup> gear on a manual transmission or 3<sup>rd</sup> gear on a 4 speed automatic transmission. Using these gears provides the most accurate power rating because the results are not affected by the torque multiplication which can occur when using lower gears.

The F150, however, will not be able to run a full dyno run in 3<sup>rd</sup> gear. The wheel speeds generated are higher than most dynos will allow. The simple solution is to perform all dyno runs in 2<sup>nd</sup> gear, although this method can present problems due to the F150's torque management control system.

Torque management is nothing new. Manufacturers have been using it to control rev limiters, speed limiters and traction control for many years. The F150 also uses torque management to control the actual rate of acceleration of the vehicle. There is also torque management present when the transmission is placed in 1<sup>st</sup> and 2<sup>nd</sup> gears. The torque management can cause erratic and inaccurate dyno results. Because of the torque management, it is moderately difficult to achieve accurate results from dyno runs.

Currently, the most consistent and accurate method of performing dyno runs is as follows:

- Obtain a scan tool that allows for “Active Command” modes. The Hickok NGST<sup>TM</sup> is the one Edge Products uses for testing and also the recommended tool. (Note: Diagnostic modes may vary between tool manufacturers and some options may not be available, including “Active Command” modes.)
- With the vehicle in “Drive” and using the scan tool in “Active Command” mode, select 2<sup>nd</sup> gear and lock the torque converter. This will prevent the transmission from shifting into 3<sup>rd</sup> giving you a clean run over the full RPM range.
- Accelerate the vehicle to between 1750 and 2000 RPM. Maintain a steady RPM before beginning your run. To achieve consistent and accurate results, all subsequent runs should be made from the same RPM starting point.
- Complete your dyno run as normal.

This method should provide accurate performance results.

Note: Performance calculations may vary from dyno to dyno, even among dynos of the same model. Calculated performance values will also vary based on many factors including vehicle condition, ambient weather conditions, geographic location (altitude), fuel quality, and other factors. The gains you achieve may be higher or lower than the average advertised gains achieved during testing. This is normal and does not necessarily indicate a problem with the product.



## Troubleshooting/Tips

*Tip:* Programming your vehicle may expose existing defects in your vehicle's PCM that could disable your vehicle. It is advised that you do not program your vehicle in remote locations in case of failure.

*Tip:* Keep in mind that the *Evolution* is a high performance product and that not all vehicles deliver the exact same power output when programmed with the *Evolution*. It is recommended that you select a program that will best fit your needs. Whether towing, or traveling long distances at high speeds, choose your power level wisely and keep in mind the condition and tolerances of your vehicle when selecting a suitable power level.

- **NO DISPLAY WITH KEY ON** – If you should get no display when turning the key on, check all of your fuses and make sure your battery is fully charged. Disconnect and reconnect the OBD-II cable to ensure the *Evolution* restarts properly. If the unit restarts but fails to stay on, or fails to turn on when the key is on, there is most likely a communications issue. Contact Edge Products Technical Support for further assistance.
- **NO START** – If you experience a “No-Start” condition after programming your PCM, return to the *Power Programming* menu and select *Return to Stock*. This will allow the *Evolution* to reprogram the PCM with the factory calibration and recover the PCM. If, after reprogramming, you still have a “No-Start” condition, contact Edge Products Technical Support. A member of our support team can further instruct you on possible recovery procedures.
- **ERROR CODE 0xF1 (AFTER PCM READ)** – If you are receiving this error code right after the *Evolution* reads your PCM, check for updates using the Lightning® software. If the problem continues, go to the *Utilities* menu and select *Read Stock Calibration*. Then call tech support to take steps to create a new calibration for your vehicle.
- **ERROR CODE 0xF1 (IN CUSTOM MENU)** – If you are receiving this error code while trying to configure your custom options, disconnect from the OBDII connector, turn the key to the ON position, and plug the *Evolution* back in. After getting to the main screen (past Intro and Disclaimer), wait 15 seconds. This will give your unit time to load parameters it needs to perform the custom changes. You should now be able to perform your custom changes.

### Edge Products Technical Support

(888) 360-EDGE

Mon. thru Fri. 8:00am to 5:00pm MST

Please have the Part Number (i.e. EEF2100), the Version Number and Manufacture Date prior to calling Tech Support. This will help ensure quick and accurate support.

## Commonly Used Acronyms

ACT = Air Charge Temp	KOEO = Key On Engine Off
ACV = ThermaCTOR Air Control Sensor	KOER = Key On Engine Running
AOD = Automatic Overdrive Transmission	KS = Knock Sensor
APP = Accelerator Pedal Position	LOAD = Engine Load
AXOD = Automatic Overdrive Transmission	LOS = Limited Operation Strategy
BAT = Battery Voltage	LPD = Line Pressure Desired
BCM = Body Control Module	LUS = Lock-up Solenoid
BOO = Brake On/Off Switch	MAF = Mass Airflow
BP = Barometric Pressure Sensor	MAFV = Mass Airflow Sensor Voltage
CCD = Computer Controlled Dwell	MAP = Manifold Absolute Pressure
CCO = Converter Clutch Override	MAT = Manifold Air Temp
CDR = Crankcase Depression Regulator	MCU = Microprocessor Control Unit
CEL = Check Engine Light	MIL = Malfunction Indicator Light
CFI = Central Fuel Injection	MPH = Miles Per Hour
CHT = Cylinder Head Temperature	OHC = Over Head Camshaft
CID = Cylinder Identification Sensor	OSS = Output Shaft Speed
CKP = Crank Position Sensor	PCM = Powertrain Control Module
CMP = Cam Position Sensor	PFE = Pressure Feedback EGR Sensor
CPS = Crankshaft Position Sensor	PIP = Profile Ignition Pickup
DTC = Diagnostic Trouble Codes	PSPS = Power Steering Pressure Switch
ECA = Electronic Control Assembly	RPM = Revolutions Per Minute
ECM = Electronic Control Module	SES = Service Engine Soon
ECT = Engine Coolant Temp	SIL = Shift Indicator Light
EDF = Electric Drive Fan Relay	SPARK = Spark Advance/Retard
EDIS = Electronic Distributor	SPOUT = Spark Output Signal (from ECA)
EGO = Exhaust Gas Oxygen Sensor	STAR = Self Test Automatic Readout
EGR = Exhaust Gas Recirculation	TAPS = Throttle Angle Position Sensor
EGRC = EGR Control Solenoid	TCM = Transmission Control Module
EOT = Engine Oil Temperature	TFI = Thick Film Ignition System
EVP = EGR Position Sensor	TFT = Transmission Fluid Temperature
EVR = EGR Valve Regulator	TGS = Top Gear Switch
FDM = Fuel Delivery Module	THS = Transmission Temperature Switch
FPM = Fuel Pump Monitor	TPS = Throttle Position Sensor
FRP = Fuel Rail Pressure	TQC = Torque Control
HEGO = Heated Exhaust Gas Sensor	TSS = Turbine Shaft Speed
IAT = Intake Air Temperature	TTS = Transmission Temperature Switch
ICM = Integrated Controller Module	VAF = Vane Air Flow Sensor
IDM = Ignition Driver Module	VAT = Vane Air Temperature
ISC = Idle Speed Control	VCT = Variable Cam Timing
ITS = Idle Tracking Switch	VSS = Vehicle Speed Sensor
IVS = Idle Validation Switch (Diesel)	WAC = WOT A/C Cut-off Switch
KAM = Keep Alive Memory	WOT = Wide Open Throttle