

NEW PRODUCTS FOR 2007

# MSD<sup>®</sup> IGNITION



[WWW.MSDIGNITION.COM](http://www.MSDIGNITION.COM)

# MSD<sup>®</sup> IGNITION

## NEW PRODUCTS FOR 2007

# PERFORMANCE ELECTRONICS FOR 2007

For more than 35 years, you've known and trusted MSD to handle all of your ignition needs. As the clear leader in ignition components, you know your engine will always run its best with MSD firing the plugs. For 2007, you'll notice a few new products that fall outside the ignition product categories, such as the new DashHawk vehicle information system and the Blaster Electronic Fuel Injection system. While these products don't fit squarely under the ignition banner, they require an understanding of advanced electronics combined with performance. And that is exactly what MSD Ignition specializes in.

In the past few years, MSD has teamed up with other leaders in performance electronics: Racepak, the leader in racing acquisition systems; Superchips, the plug-in tuner specialists; and Edge Products, the inline tuning masters. Together, through sharing technologies and information, this family of companies is moving performance electronics forward at a great rate with some of the most innovative and technologically advanced electronic products available to the aftermarket.

Racepak has a strong presence in most every form of motorsports. You'll find their advanced data systems on everything from circle track cars and fuel dragsters to a growing line of powersports applications. From the single original Racepak data recorder, the line has grown to include a large selection of unique loggers, software, gauges, and ancillary equipment all designed for the sole purpose of gathering data.

Superchips and Edge Products both specialize in late model domestic performance computer programming. However, they both have their own technology to improve performance. Superchips specializes in plug-in and program tuners while Edge knows the ins-and-outs of communicating with the factory ECU to modify its signals. Both companies have incredible capabilities in late model computer technologies and advancements.

Together, these brands are combining their technologies to bring you, the performance enthusiast, the best performing electronic components and controls available.

MSD Ignition is very excited to present our best new products for 2007. And while these latest products are the hottest things going, they are just the beginning of what

we have in store for the next year. With the brain trust of MSD, Racepak, Superchips and Edge, there are going to be exciting new products being introduced all the time. Keep up with our most current developments at [www.msdisgnition.com](http://www.msdisgnition.com) all year long!

The logo for Edge Products features the word "EDGE" in a large, bold, italicized font with a red-to-black gradient. Below it, the word "PRODUCTS" is written in a smaller, black, sans-serif font. The entire logo is set against a white background with a slight drop shadow.The logo for Superchips features the word "Superchips" in a bold, italicized font with a yellow-to-black gradient. A red dot is positioned above the letter "i". The logo has a thick black outline and a slight drop shadow.The logo for Racepak Data Systems features a yellow and black checkered flag pattern on the left. To the right, the word "Racepak" is written in a bold, italicized font with a yellow-to-black gradient. Below it, the words "DATA SYSTEMS" are written in a smaller, black, sans-serif font. The entire logo is enclosed in a yellow and black border.

2

[WWW.MSDIGNITION.COM](http://WWW.MSDIGNITION.COM)

NEW PRODUCTS FOR 2007

**MSD**  
**IGNITION**

# DASHHAWK™

## DashHawk Vehicle Information Display

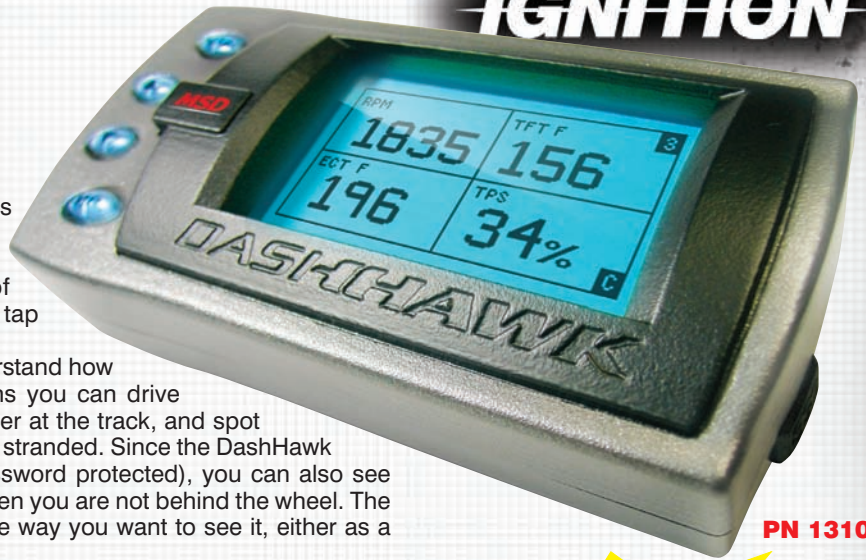
Keep a sharp eye on your vehicle's performance and vitals with MSD's new information display, the DashHawk! Your vehicle's computer contains a wealth of information and the DashHawk lets you tap into it all!

With the DashHawk, you can truly understand how your vehicle is performing - which means you can drive more fuel efficiently on the road, race faster at the track, and spot maintenance issues before they leave you stranded. Since the DashHawk saves and records maximum values (password protected), you can also see how someone else has driven your car when you are not behind the wheel. The DashHawk displays all this information the way you want to see it, either as a bar graph or digitally.

Simply connect the DashHawk to the diagnostic port and you have access to over 100 parameters on 11 separate screens. Navigation through the screens is as simple as the push of a button. Values such as speed, engine rpm, oil pressure, coolant, oil and transmission temps, throttle position, engine load and a host of other parameters can all be viewed via the DashHawk.

As if all of that information isn't enough, the DashHawk will also record 0-60 mph times and even quarter mile times! All of this information can be recorded (up to 90 seconds) and then downloaded to a PC. Once downloaded, you can graph the information using the software supplied.

Unlike conventional analog gauges, the DashHawk provides the ability to set both visible and audible alerts when a parameter such as speed or coolant temp reaches a certain value. Set alerts on rpm and the DashHawk also functions as an incredibly precise shift light. The unit can be used as a diagnostic tool by displaying trouble codes (along with a description of each code so you know exactly what the problem is). The DashHawk gives you the ability to clear the code and see if it comes back, which can save a costly trip to the dealer. There's no need to worry about the DashHawk becoming obsolete either. With a simple Internet connection, MSD will be able to update your DashHawk with the latest vehicles and updated features.



PN 13100

**Record 1/4 ET MPH  
and more!**



**DashHawk Vehicle Information Display ..... PN 13100**

**Download DashHawk's data to your PC for closer examination.**

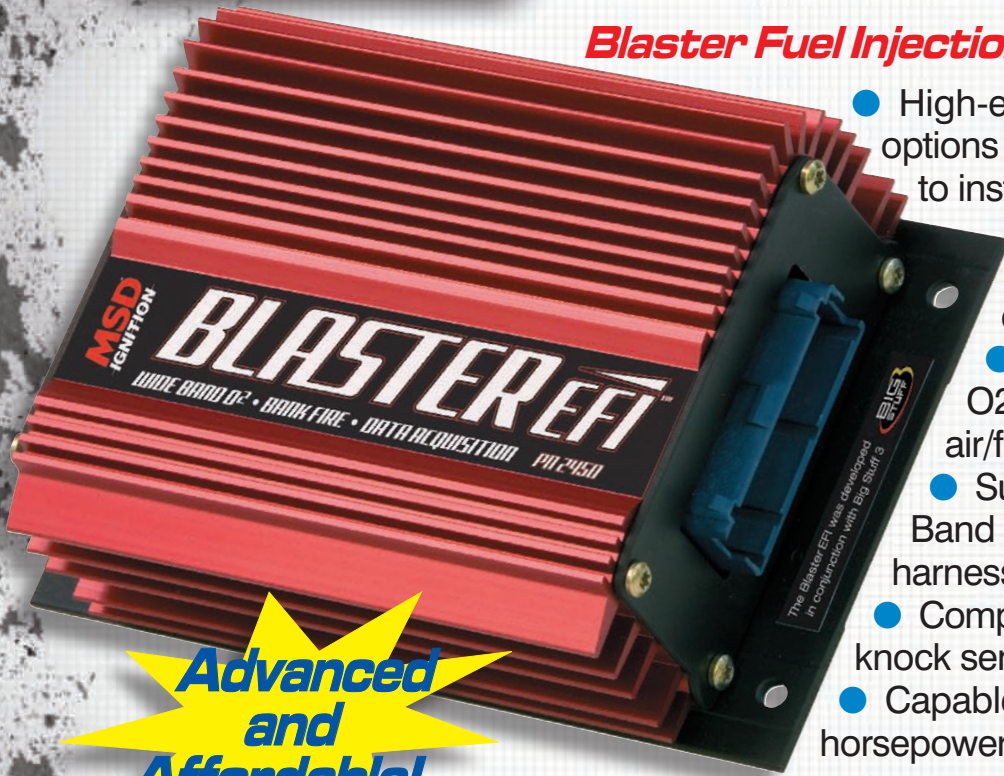
- Universal OBDII multi-gauge displays over 100 parameters
- Connects to your vehicle's diagnostic port
- Display 0 – 60 mph and 1/4-mile times with up to five other parameters
- Records maximum values for speed, rpm and water temperature
- Accepts one additional sensor, such as a wideband O2 sensor
- Backlit screen can be set to 16 million colors to match any interior
- Set visual and audible alerts for any value
- Built-in shift light capability
- Check and clear trouble codes
- Any parameter can be displayed on any screen, in any order, in any fashion!

# MSD IGNITION

## NEW PRODUCTS FOR 2007

# ELECTRONIC FUEL INJECTION

### Blaster Fuel Injection System™



- High-end EFI performance and options in an affordable and easy to install system
- Improve your car's overall performance and driveability
- Closed loop wide-band O2 sensor ensures accurate air/fuel ratio feedback
- Supplied with the ECM, Wide-Band O2 sensor and main wiring harness
- Compatible with GM sensors and knock sensor
- Capable of handling up to 1,000 horsepower engines for street or strip

**Advanced  
and  
Affordable!**

U.S. PATENT 6,928,362

#### The Techie Stuff:

- Closed loop idle/air speed control functionality
- Uses GM MAP, TPS, coolant sensors
- True speed-density algorithms allow for easy tuning
- Drives eight high impedance injectors
- Advanced transient fueling algorithms
- Seamless decel fuel cut-off
- Configurable load and RPM axis to enable optimization in desired range
- 50Hz, 10-bit data acquisition of selected engine variables
- Compatible with 1, 2, 3 and 4 BAR MAP sensors

Most performance enthusiasts think of high voltage coils when they hear the name Blaster, but for 2007, you'll be introduced to the all new Blaster EFI™ system! That's right, MSD now offers a complete Electronic Fuel Injection System!

MSD's Blaster EFI system is an affordable electronic fuel injection system that delivers wide-band oxygen sensor feedback and onboard data acquisition (without a laptop connected). This means you get a closed loop EFI system that is constantly monitoring the exhaust gases and making adjustments to achieve the best performance possible. From idle to wide open throttle, the Blaster EFI system will deliver great driveability and performance!

The Blaster EFI system was developed in conjunction with the EFI wizards at Big Stuff 3. The system is a bank-fire set-up so there is no cam synchronization signal needed, which simplifies installation. From there, you can tweak and tune with the easy to use software to fit your driving style and need.

One helpful tool for tuning is the on-board data acquisition feature of the Blaster. This will allow you to review selected engine management variables to be recorded in real time as fast as 50 times per second, with 10-bit resolution, for up to 5.5 minutes. Once recorded, the data can be analyzed off-line with the supplied MSD software.

The main harness is clearly labeled and easy to connect to common GM type sensors. The only items you'll need to purchase separately are an injector harness (V8, V6 or 4-cylinder) and a distributor harness to match your ignition. Get your muscle car or street rod to perform its best with modern technology from MSD's Blaster EFI System.

**Available in spring 2007!**

**Blaster EFI System** ..... **PN 2450\***

**For more information go to [www.msdisignition.com](http://www.msdisignition.com).**

4

[WWW.MSDIGNITION.COM](http://WWW.MSDIGNITION.COM)

\*Not CARB Approved.

NEW PRODUCTS FOR 2007

# TIMING TWISTER™

# MSD IGNITION

## Timing Twister for GM, Ford and Dodge

Imagine the fun you'll have tuning your late-model ride with MSD's new Timing Twister! This sophisticated, user friendly control plugs into the stock wiring harness and gives you the ability to adjust the engine's timing with the twist of a dial.

The Timing Twister has four rotary dials that give you the ability to advance the timing curve, set up a step retard or even select a retard rate based on boost pressure. Control over the timing can help improve economy, improve performance and help tune the engine for other modifications.

The Timing Twister does not modify ignition timing at idle, but becomes active above 1,800 rpm. Once above that rpm, the entire timing curve can be advanced up to 9° in 1° increments. There is another setting for a wire-activated step retard, primarily designed for use with nitrous oxide. Another great feature is for the forced induction crowd. When used with the optional MAP sensor, you can easily dial in a retard that is based on boost pressure. Twist in .1° - 1.9° of timing per pound of boost to retard the timing up to 30°.

If you ever need to bypass the modified timing settings, there's a dial to twist and the factory curve will be used. How easy is that! Go ahead, give your timing a twist!



PN 8625\*

### TIMING TWISTERS ARE AVAILABLE FOR:

- GM LS1/LS6 ..... PN 8625\*
- GM LS2 ..... PN 86251\*
- Ford 4.6L, '96-'04 ..... PN 86252\*
- Dodge 5.7L, '03-'06 ..... PN 86253\*

- Adjust the timing with a simple twist!
- Advance the ignition timing up to 9°
- Select a step retard up to 18° for nitrous use
- Twist in a boost retard from .1° to 1.9° per pound of boost
- Available for GM LS1 and LS2 platforms, Chrysler Hemi and late model Fords



Adjustments to the timing are easily made with a twist of a rotary dial.



\*Not CARB Approved.

# MSD<sup>®</sup> IGNITION

NEW PRODUCTS FOR 2007

## FIRE FOR FORDS

*More model  
years and engines  
coming soon!*

There's no denying the performance and popularity of the late model Ford Mustang. For owners looking to improve their Ford's performance on the street or strip, MSD offers a variety of ignition upgrades to fire up your Mod Motor.



PN 8242

### **Ford Blaster Coil-on-Plug**

The improved spark energy and voltage of MSD's Blaster 2 Coils, combined with reliability, have made them a favorite for performance enthusiasts. Whether firing a restored BOSS 429 or a Saturday night circle tracker, the Blaster 2 has always gotten the job done. MSD is excited to offer Blaster

coils for late model Ford engines with Coil-on-Plug technology!

The new Blaster CoPs are designed as a direct bolt-in replacement coil for many SOHC Modular Motors. The housing and installation are the same as the factory, but that's where the similarity ends. Inside the MSD red housing, engineers spec'd better material to assemble the primary and secondary windings. There is also patented dual magnet technology to step up the output. Together, this combines a coil that produces higher voltage and spark energy! The Coil-on-Plug design of the Blaster CoPs puts the spark energy right out of the coil and across the plug gap to improve the combustion and output of the engine.

- Improved spark energy and voltage output
- Patented winding design and materials
- Direct bolt-in to factory connectors

**The Blaster 2 CoPs are available individually or as a complete set of eight.**

**Ford Coil-on-Plug, '99-'04, 4.6L SOHC, individual ..... PN 8242**  
**Ford Coil-on-Plug, '99-'04, 4.6L SOHC, set of eight .. PN 82428**

CARB Approval Pending.



### **Dual DIS-4 Harness**

Using MSD's DIS-4 ignition systems on your coil-on-plug Ford has always been a great upgrade, but honestly, the wiring poses quite a challenge. To ease this install, we now offer a wiring harness kit that'll make the install nearly a direct plug-in!

The harness provides a splice-free installation with connectors that plug directly into the factory unit. They even have corresponding wire colors! When used in conjunction with two DIS-4 Ignitions and four Dual Ignition Adapters, PN 89121, your coil-on-plug Ford will receive all the spark it needs plus a two-step rev limit and step retard. And the best part, wiring will only take about an hour!



PN 88813

**Dual DIS-4 Installation Harness ..... PN 88813**

**Note:** Complete installation on a late model Ford requires two DIS-4 Plus Ignition Controls and four Tach Adapters, PN 89121.

- Easily install two DIS-4 Ignitions on late model Ford Engines
- Easy connections with no splicing or cutting into factory wiring
- Wiring the system will take only an hour

NEW PRODUCTS FOR 2007

# MORE FIRE FOR FORDS **MSD** IGNITION

## *Ignition Harness Adapter for 6-Mod Controller*

**PN 88814**

The 6-Mod Ignition Controller was originally developed for Mod Motors that were fed through a carburetor rather than an electronic fuel injection system. However, with the useful options that the 6-Mod provides, such as two rev limits, a step retard and easy control over the timing, the EFI guys wanted a way to take advantage of the adjustment. The answer lies in this new Harness Kit.

This new Harness provides a splice-free installation of the MSD 6-Mod Controller to factory equipped EFI vehicles making installation a snap. All of the connectors plug directly to the factory units so there is no cutting or splicing of your factory wires. The compact "tach adapters" ensure that the ECU and the 6-Mod receive the correct signals required to keep both systems operating as designed.

Once installed, the 6-Mod allows users to advance or retard the factory's timing curve, program a step retard for use with nitrous systems or even map out a timing curve through a laptop by using MSD's Pro-Data+ software.



**6-Mod Harness for EFI** ..... **PN 88814**

## *Super Conductor® Wire Set for Modular Ford*

Our 8.5mm Super Conductor spark plug wires are the perfect finish to your Modular Motor. With less than 50 ohms resistance combined with high EMI suppression you won't find a better performing wire at any price.

MSD offers a variety of wire sets for Ford Mods, but this new set is universal, meaning the wires are designed for custom applications. If the stock coil packs have been moved to accommodate a cleaner installation, this is the set for you. The wires are supplied with the factory type spark plug terminal and boot installed while the coil side is loose. This way you can route the extra long wires, cut the wires to length and terminate the ends for a perfect fit.



**PN 6011**

**Universal Wire Set, 4.6L SOHC, Dual Coil** ... **PN 31879**

- Ideal for Fords that have been retro-fit with Modular Motors
- Factory-style boots and terminals for a perfect fit
- Low resistance puts more spark energy to the cylinder



# MSD IGNITION

## NEW PRODUCTS FOR 2007

# CONTROL YOUR LS2



### 6LS-2 Ignition Controller for Carbureted LS2 Engines

While it may seem blasphemous to some, putting a carburetor on a GM Gen-III V-8 is a great option for those wanting the advantages of the aluminum small block without the headaches of wiring a modern EFI system. The 6LS-2 Controller allows you to map a timing

advance curve with MSD's easy-to-use Pro-Data+ software. Other programmable features include a two-step rev limiter, a vacuum advance curve for cruising economy and even a step retard in case you want to add a little nitrous to the mix.

The 6LS-2 is designed specifically for the LS2 and its 58-tooth wheel, which can be easily recognized by its gray harness connector. This compact ignition controller is fit with matching factory connectors for a direct installation. Only a handful of connections are required; the coils, crank sensor, MAP sensor and the cam sensor. You'll have your carb'ed LS2 running in no time!

**PN 6012**

\*Not legal for use or sale on pollution controlled vehicles.

**6LS-2 Ignition Controller for Carbureted LS2/LS7 Engines ..... PN 6012\***

- Runs a carbureted LS2 engine without complicated EFI hardware
- Map a timing curve using Pro-Data+ software
- Programmable two-step rev limiter, vacuum advance curve and step retard
- Direct plug-in to factory components
- Programmable via a PC through MSD's Pro-Data+ software.

### EFI Harnesses

This harness allows you to easily connect the 6LS-2 to a factory EFI system to take advantage of timing adjustments and settings!

**6LS-2 to EFI Harness ..... PN 88862**

This nifty extension harness will reach the front-mounted cam sensor on an early (24-tooth trigger wheel) LS2 when installing a 6LS Ignition Controller (PN 6010).

**6LS to Early LS2 Cam Sensor Extension Harness ..... PN 88861**

### Multi-Spark Coils for LS2

- Direct replacement multiple sparking coils for many GM Gen-III engines
- Advanced circuitry produces three times the spark energy of stock coils
- Direct plug-in to the factory harness

They said it couldn't be done, but they haven't met MSD's engineers! At last, a high-performance, multi-spark replacement coil for the remarkable GM Gen-III small block!

The complex electronic controls of the Gen-III engine management system presented MSD engineers a substantial challenge, as the control drivers are built into the OE coils. We were able to design an advanced circuit that will operate with the factory electronics of the Gen-III engine controls while producing a higher output spark. Not only do you get a higher voltage spark, but the coil will deliver multiple sparks! That's right - multiple spark discharge coils!

This version of the MSC is for GM's LS2 variant, and will provide significantly more spark than the stock components. These coils produce up to three times the spark energy of the stock coils plus they deliver multiple sparks to help keep the engine clean at an idle. This new kit provides everything you need to install the MSCs on your car, including eight coils and mounting hardware.

**Multi-Spark Coil for LS2, individual ..... PN 8247**

**Multi-Spark Coils for LS2, set of eight ..... PN 82478**



**PN 88862**



**PN 8247**



# DATA ACQUISITION



## Racepak G2X™ GPS-based Data Acquisition

- Track mapping with lap and segment times
- Acceleration and lateral g-forces
- Data from optional inputs
- Engine RPM
- Battery voltage
- Vehicle speed

Stop guessing and start winning! The new G2X GPS Data Acquisition System from Racepak and MSD Ignition can help you improve your lap times by showing you how you and your car react in race situations.

The G2X provides accurate speed, lap and segment times through the use of Global Positioning System satellites. This means there's no need to set up track-side beacon transmitters, receivers, or their associated wiring.

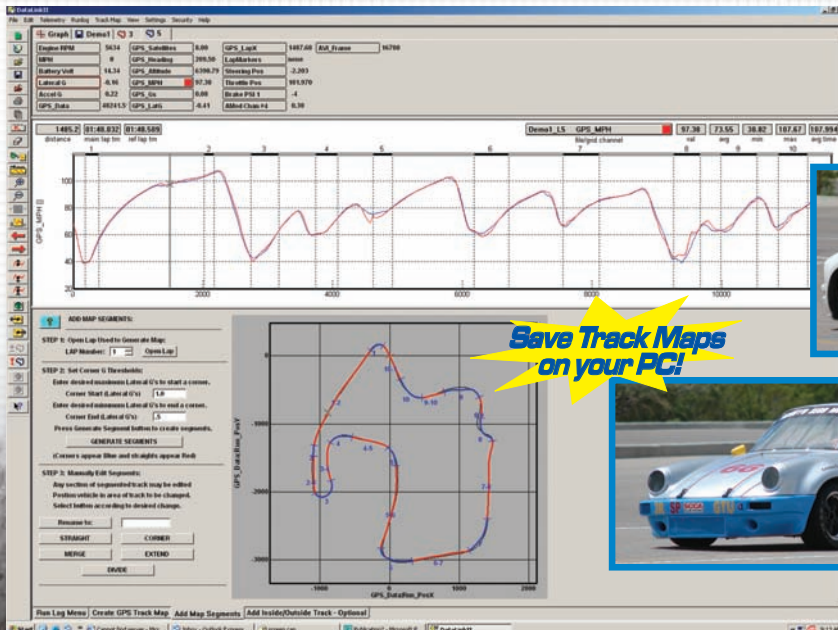
The technology employed in the G2X has been utilized for years in various forms of Motorsports. We have logged thousands of on-track laps in creating an economical data logger that is both rugged and dependable in a wide variety of environments. Information about braking, steering and throttle can be easily added through Racepak's V-Net Technology.

After running a few laps, simply remove the Compact Flash card from the G2X and download the information to your PC. Racepak's Datalink software is easy to view and navigate. Once a track map is created, you'll always have it on file to use at other events.

The new G2X will provide you with the information you need to win!



### Racepak G2X GP Acquisition ..... PN 11200



Save Track Maps on your PC!

Updated Design!

# HIT THE WATER

### *6M-2L Marine Ignition with Rev Limiter*

- MSD's popular 6M-2 with a built-in rev-limiter
- Multiple sparks improve starting, throttle response and idle quality
- Circuitry is potted for a weather-proof housing
- Weathertight connectors protect wiring from water and chemicals

PN 6560



What do you get when you add a rev limiter to the MSD's already bullet-proof 6M-2 Marine Ignition? The MSD 6M-2L! This ignition is designed for performance marine applications where a high energy and reliable ignition is a necessity. The capacitive discharge (CD) multiple sparks from the 6-series circuitry ensures easier starting, improved performance and reduced plug fouling while idling.

The MSD 6M-2L has the same mounting footprint as the original unit, so it will easily fit into existing brackets. The proven Soft-Touch rev limiting action is set using our marine rpm modules so you'll be able to set a rev limit exactly where your engine needs it.

The 6M-2L is built to deal with constant high rpm and load conditions unique to marine applications. To protect the 6M-2L's electrical circuitry from direct water contact, the entire unit is potted with red polyurethane. This material prevents the electrical components from coming into contact with water or other chemicals that could cause damage. Weathertight connectors with multi-ribbed seals are unaffected by water, oil, gasoline and most other chemicals associated with boats.

The 6M-2L can be triggered by either a magnetic pickup (distributor or crank trigger), amplifier or by a breaker point distributor. The cable harness has the proper connector so you can plug the 6M-2L directly into one of MSD's Pro-Billet Marine Distributors.

**6M-2L Marine Ignition w/Rev Limiter ..... PN 6560**

**Note:** Pending UL Approval.

### *Black Caps*

You'll find MSD support at a number of shows, races and events throughout the year. One of the most popular questions we received last year was whether our caps were available in black. It seems that a lot of people with restified muscle cars or detailed engine compartments would prefer to be a little more subtle than our red caps would allow.

We went down to our injection mold department and waited until one of the machines ran out of the MSD red DuPont® Rynite material. Once the operator turned away, we filled the hopper with black material and flipped the on switch. The result is a great looking satin black cap that is supplied with our wire retainer.

**MSD and GM HEI Type Window Cap, Black ..... PN 84333**  
**MSD and Ford Cap, Black ..... PN 84083**

PN 84333



PN 84083

# LIGHT IT UP

## Dual Coil Ignitor and CPC Signal Converter

In the past, adding ignition boxes and coils to factory transistorized ignitions was virtually impossible. All that has changed now that MSD has developed the Dual Coil Ignitor and CPC Signal Converter. The MSD PN 6302 and PN 6304 both allow you to install an MSD DIS-2 or DIS-4 on 4-cylinder engines with either waste spark or coil-per-cylinder ignitions. Both require MSD coils to be installed for a complete package.



- DIS Dual Coil Ignitor** ..... **PN 6302**
- DIS CPC Signal Converter** ..... **PN 6304**

*Upgrade your coil pack engine to a DIS-4 Ignition.*

## Digital Shift Light

- Installs with distributors, coil packs or coil-on-plug systems ranging from single to 12-cylinders
- Programmable from 100 - 15,900 rpm down to 10 rpm increments
- Six bright LEDs are easy to view in daylight and can be dimmed at night
- Supplied with an easy to install GMR pickup!

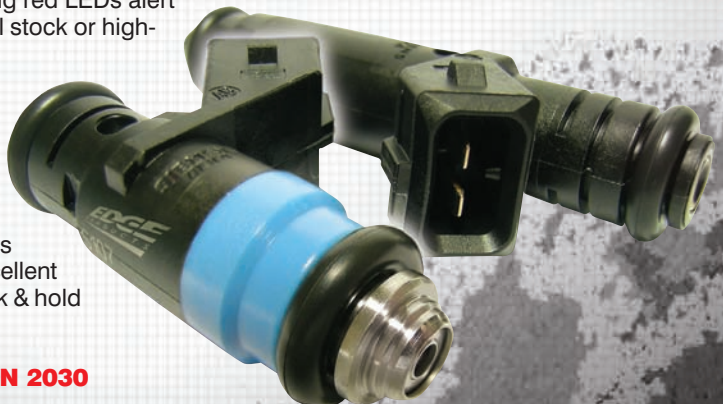


MSD's new compact Digital Shift Light is the most universal, easy to use light available! It can be installed on everything from single cylinder, points-triggered engines to high-tech Modular and GM LSX powerplants. The tiny digital controller inside the compact housing gives you the ability to program the rpm activation point through the easy to view LED panel and two programming buttons. When the engine reaches the activation rpm, the six retina-scorching red LEDs alert you to grab the next gear. The Digital Shift Light works with all stock or high-powered aftermarket ignition systems.

- Digital Shift Light** ..... **PN 89631**

## Jammer Injectors

MSD's new Jammer Injectors are the most linear injectors available. With exceptionally precise fuel control, they offer excellent idle and driveability. Jammers work with both saturated or peak & hold ECUs, and are compatible with Bosch square connectors.



- Jammer Injectors, 60-lb/hour** ..... **PN 2030**

# NEW PRODUCTS FOR 2007

## *New Retro T-Shirts*

Go Retro! While most of MSD's hottest new products are state of the art, these new T-Shirts are strictly old school. Based on an idea by our Graphic Designer Robert Martin, these great shirts feature the original MSD logo and are guaranteed to make you the coolest cat at the track! Available in M through XXL!

**Retro T-Shirt, Medium** ..... **PN 95417**  
**Retro T-Shirt, Large** ..... **PN 95427**  
**Retro T-Shirt, X Large** ..... **PN 95437**  
**Retro T-Shirt, XX Large** ... **PN 95447**



**MSD**<sup>®</sup>  
**IGNITION**

[WWW.MSDIGNITION.COM](http://WWW.MSDIGNITION.COM)